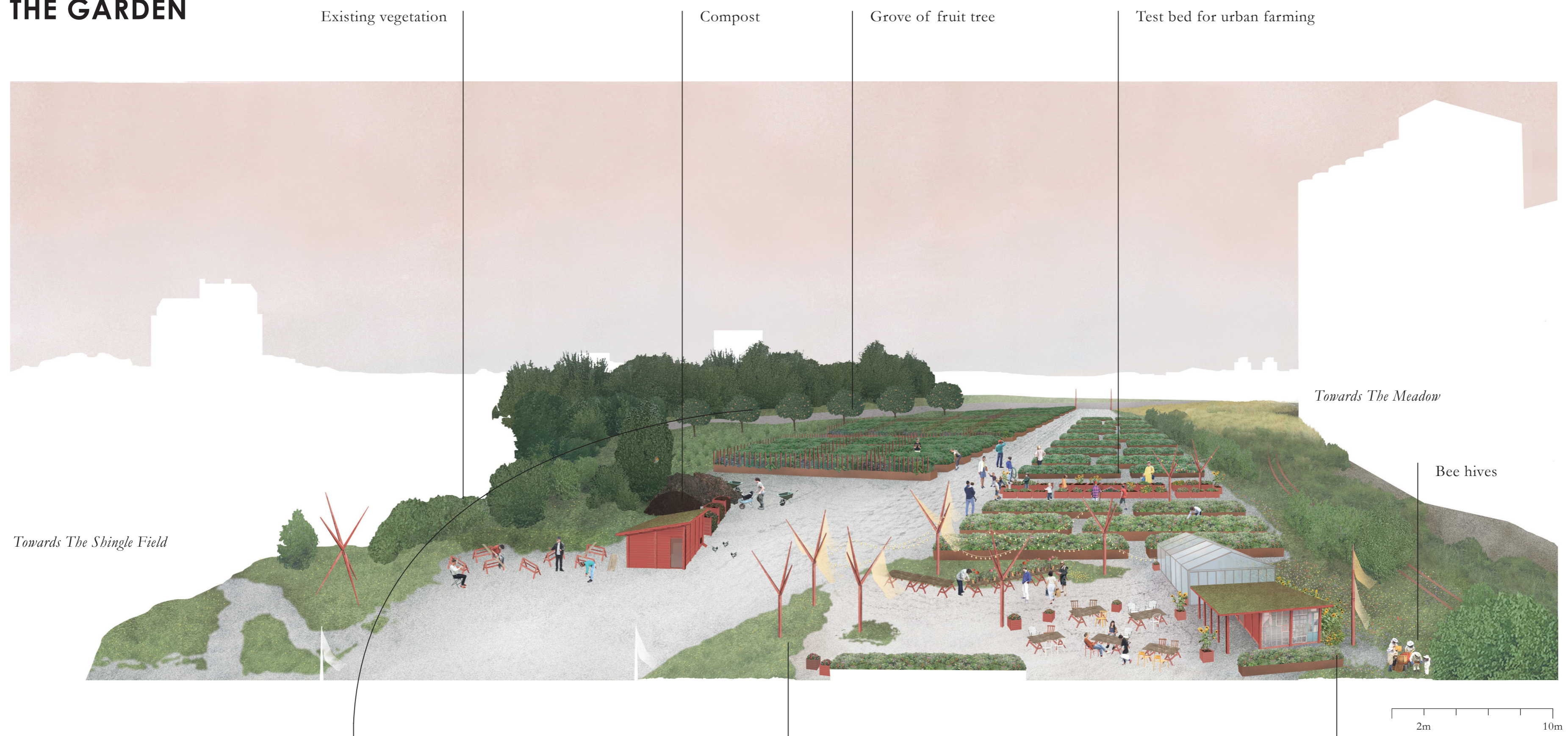


## THE GARDEN

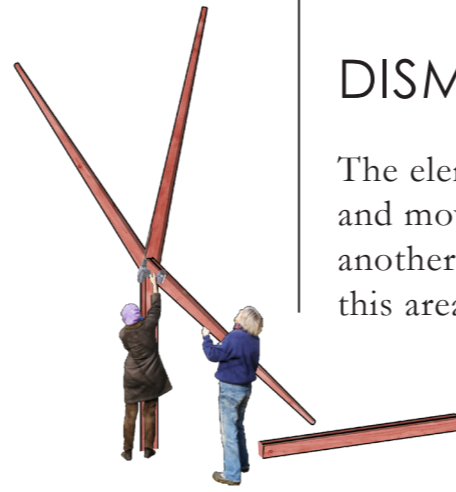


## ENGAGEMENT

Relation building events – supports citizens in the process of inhabiting the place. Summertime employees and interest groups care for and maintain the ongoing co-creation processes.

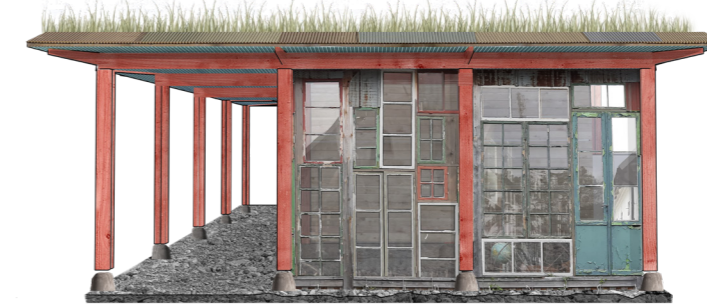
## TRACES

Along the road a grove of fruit trees are planted, connecting the alley of linden trees that are with the garden area. Like the lindens, these trees are planted in a strategic position to be able to last even after the temporary landscape of this area has disappeared. Serving as a memory of the garden that once inhabited this place, a trace of the encounters that once took place here.



## DISMANTLING

The elements can be dismantled and moved within the area or to another place in the city when this area changes.

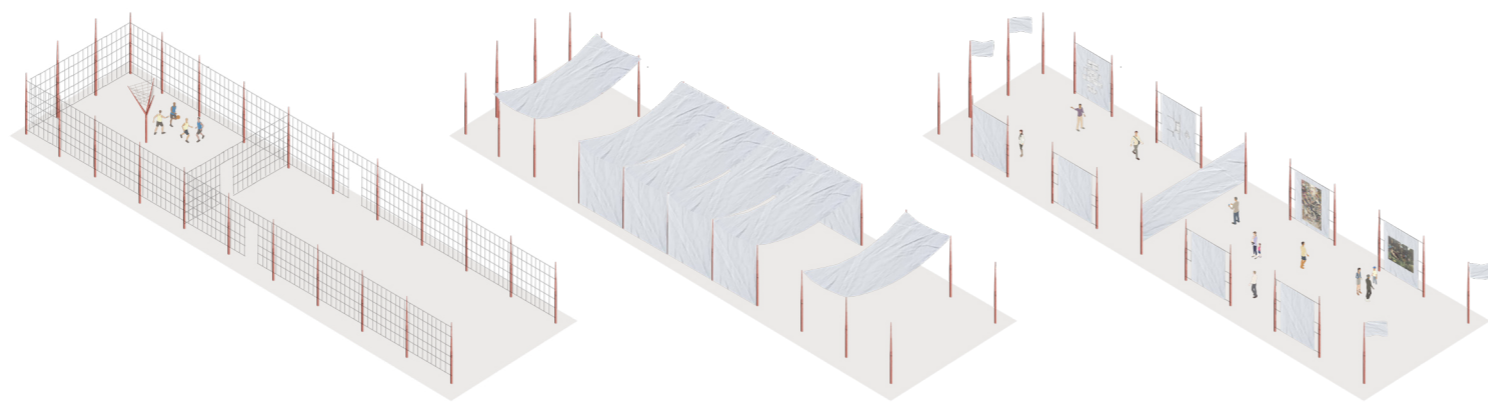


## REUSE

The café pavilion in The Garden is constructed of reused and upcycled material accumulated from the demolitions on the site.

## THE OLD TRAIN PLATFORM

The red wooden posts marks out the platform as a place to interact with. They support a flexible and temporary use and claim of the space for events or occasions.

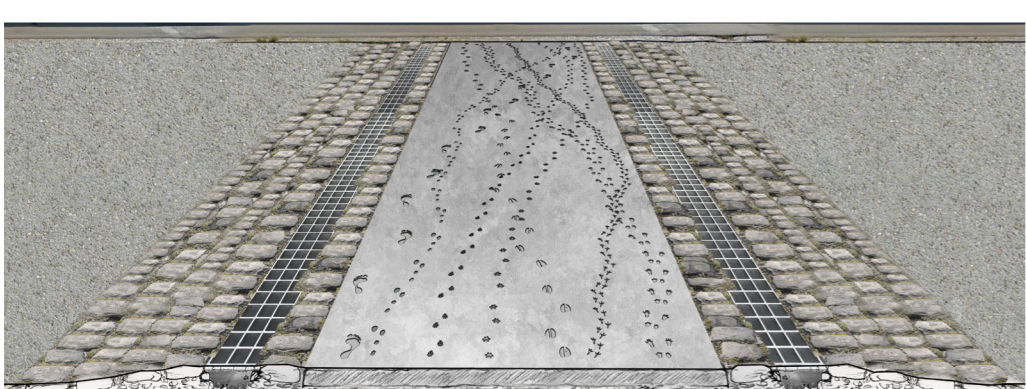


## REUSED CONCRETE STONES

The sculptural and spatial qualities of erected stones in The Bushwoods could act as a platform for different artistic purposes, expanding the area around the old train platform to a larger exhibition area.



## THE BUSHWOODS



## CROSSWALK SCULPTURE

Pace slowing features along the trafficked road increases shifts focus from the cars to the pedestrians. A sculpture reminding of the species common in cities during the peak of fossil fuel, while at the same time working as a fauna passage for small animals.

## FOOTBRIDGES

Light structures that curates the accessibility and movement of human and non-human. Encourages curiosity and exploration of the area.

## EXISTING VEGETATION

The spontaneous and unplanned existing vegetation and species inhabiting the area are kept and encouraged. Species shares the space over the hours of the day.