

By enhancing existing qualities found at the site in Västerås, this proposal aims to discuss which kinds of landscapes the urban fabric could host. Vegetation, habitats, built elements, events and reuse are introduced as strategies for announcing presences and inviting the citizens to get engaged in the area. This will open up negotiations between the species that are inhabiting the place, acknowledging the multitude of world-making agencies that the living city possesses. A living city that is to be read as a place in which natural processes, humans and non-humans are entangled in each other's life-worlds. And in which architecture can become a guiding practice that enhances the twist and turns a process might take if we allow others to take part of it.

ENHANCE
Encourage the qualities of what is already living at the site.

ANNOUNCE
A presence to show people passing by that something has been initiated here

INVITE
A participatory trial and error of co-creating the common city.

INHABIT
Activities that allow the participants to engage and to take part in the creation of the landscape of the site.

ENTANGLE
a presence to show people passing by that something has been initiated here

VEGETATION & HABITAT

EXISTING Enhance the trees, plants, and animals that are already living there, change the way we as humans perceive this uncontrolled vegetation.

TEMPORARY Inviting life to engage with the area. Allowing the expressions of multispecies citizens.

LASTING Give slowly growing elements like trees a head start by placing them in strategic positions that could remain after the area is developed.

BUILT ELEMENTS

SCULPTURAL Sudden strangers in the landscape. Recognizable sculptural landmarks that structurally support and announce a presence of human activity.

FRAMING Place building structures. Based upon modular and recognizably solid elements. A curating framework, where Spontaneous elements are applied within.

SPONTANEOUS Various reused elements to apply within the framing and installations. Citizens can "inhabit" the structures via involvement in the applying process.

EVENTS

OCCASION Temporary events that invite people to the place for one occasion – outdoor cinema, markets, workshops, gardening with children etc.

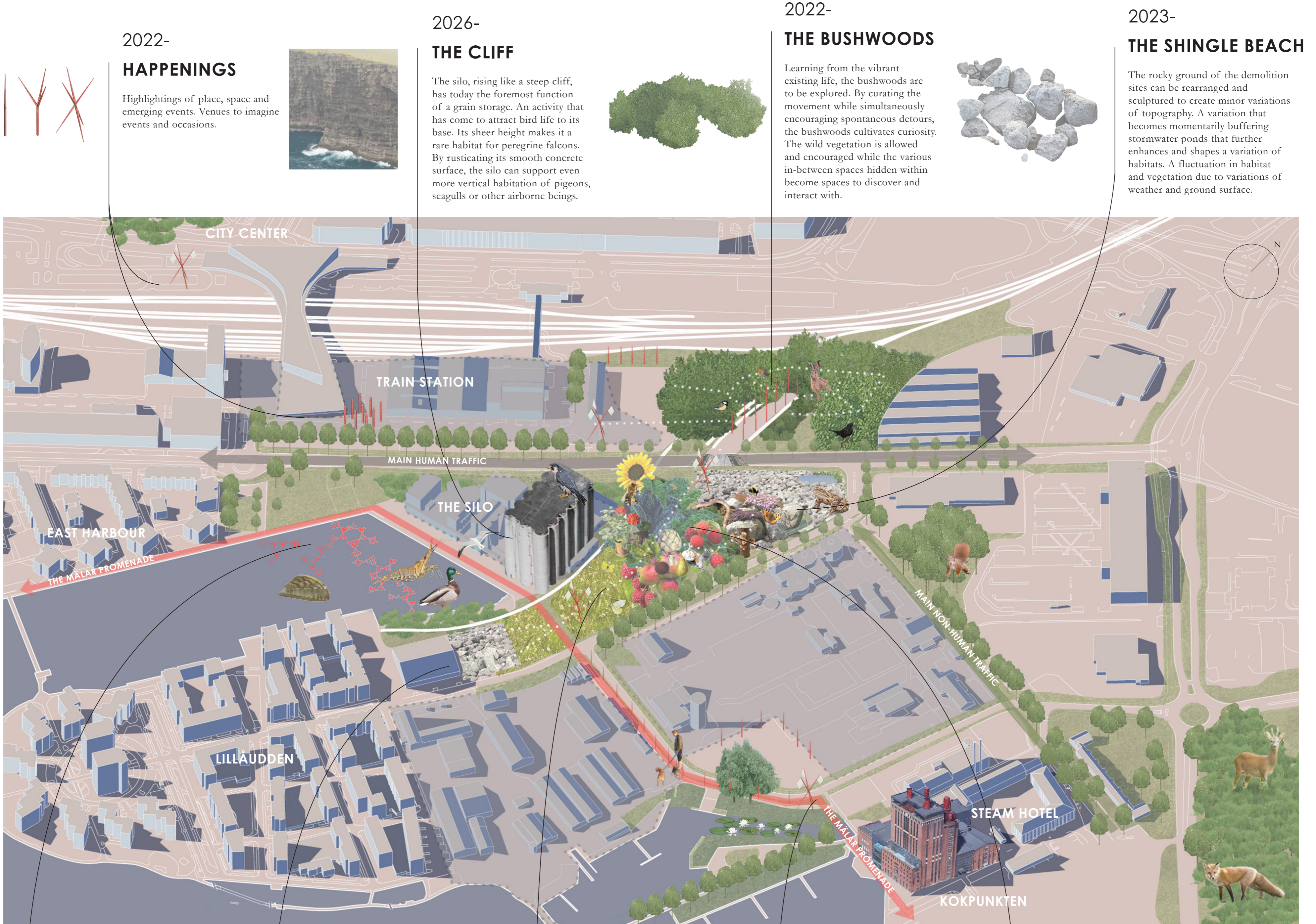
ENGAGEMENT Relation building events – supports citizens in the process of inhabiting the place. Summertime employees and interest groups care for and maintain the ongoing co-creation processes.

ENCOUNTER Small everyday events – the encounter with humans and non-humans.

REUSE

MATERIALS Accumulation and cataloging of material and building elements over time. Stored as an archive on site for expanding or informing other introduced structures.

METHODS/ KNOWLEDGE Developing knowledge and methods that could influence the city when approaching other sites.



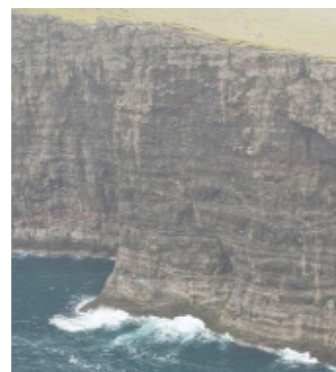
2022- HAPPENINGS

Highlightings of place, space and emerging events. Venues to imagine events and occasions.



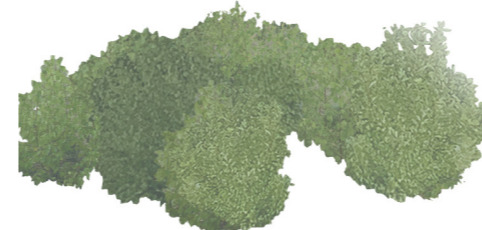
2026- THE CLIFF

The silo, rising like a steep cliff, has today the foremost function of a grain storage. An activity that has come to attract bird life to its base. Its sheer height makes it a rare habitat for peregrine falcons. By rustivating its smooth concrete surface, the silo can support even more vertical habitation of pigeons, seagulls or other airborne beings.



2022- THE BUSHWOODS

Learning from the vibrant existing life, the bushwoods are to be explored. By curating the movement while simultaneously encouraging spontaneous detours, the bushwoods cultivates curiosity. The wild vegetation is allowed and encouraged while the various in-between spaces hidden within become spaces to discover and interact with.



2023- THE SHINGLE BEACH

The rocky ground of the demolition sites can be rearranged and sculptured to create minor variations of topography. A variation that becomes momentarily buffering stormwater ponds that further enhances and shapes a variation of habitats. A fluctuation in habitat and vegetation due to variations of weather and ground surface.



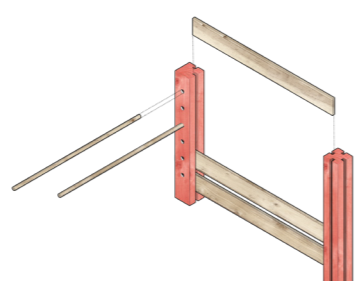
2024- MARINE ALLOTMENTS

A testbed for marine allotments engages multispecies interactions above and below the water surface. An initiation of making relations to the water and structures that support remediation and restoration of the marine fauna. The modular floating structure will grow over time and claim more space when the harbor becomes available.



2026- REUSE CENTER

Facility for storing, an accumulation of materials and components. The close connection to Målarpromenaden makes it an accessible venue for knowledge making events in relation to the material.



2026- THE MEADOW

A test-bed for ways of revitalizing impermeable surfaces. The over time interaction with the meadow makes tracks and patterns of movement and spontaneous engagement emerge in the porous ground. A framing and tolerance towards species that naturally grow in the area. A habitat, where the living presence of regular weeds can be perceived as something beautiful that softens the harshness of the area.



2022- HAPPENING

When approaching the area, pedestrians are alerted by visually recognizable elements that can inform the movement, providing clues of how to approach the area. These assemblages of elements can also work as small pavilions in which an initial dialog between the municipality and the citizen can be established.



2023- THE GARDENS

During the years with the temporary station this place will meet the new movement of people that passes over the railway. The garden area is about cultivation, about giving the human citizens' agencies to take part in the creation of the landscape. Gardening is to be seen as a platform for encounters, allowing the participants to build multispecies relations. The time and labor invested here have an important role in initiating occasions like workshops and markets.

