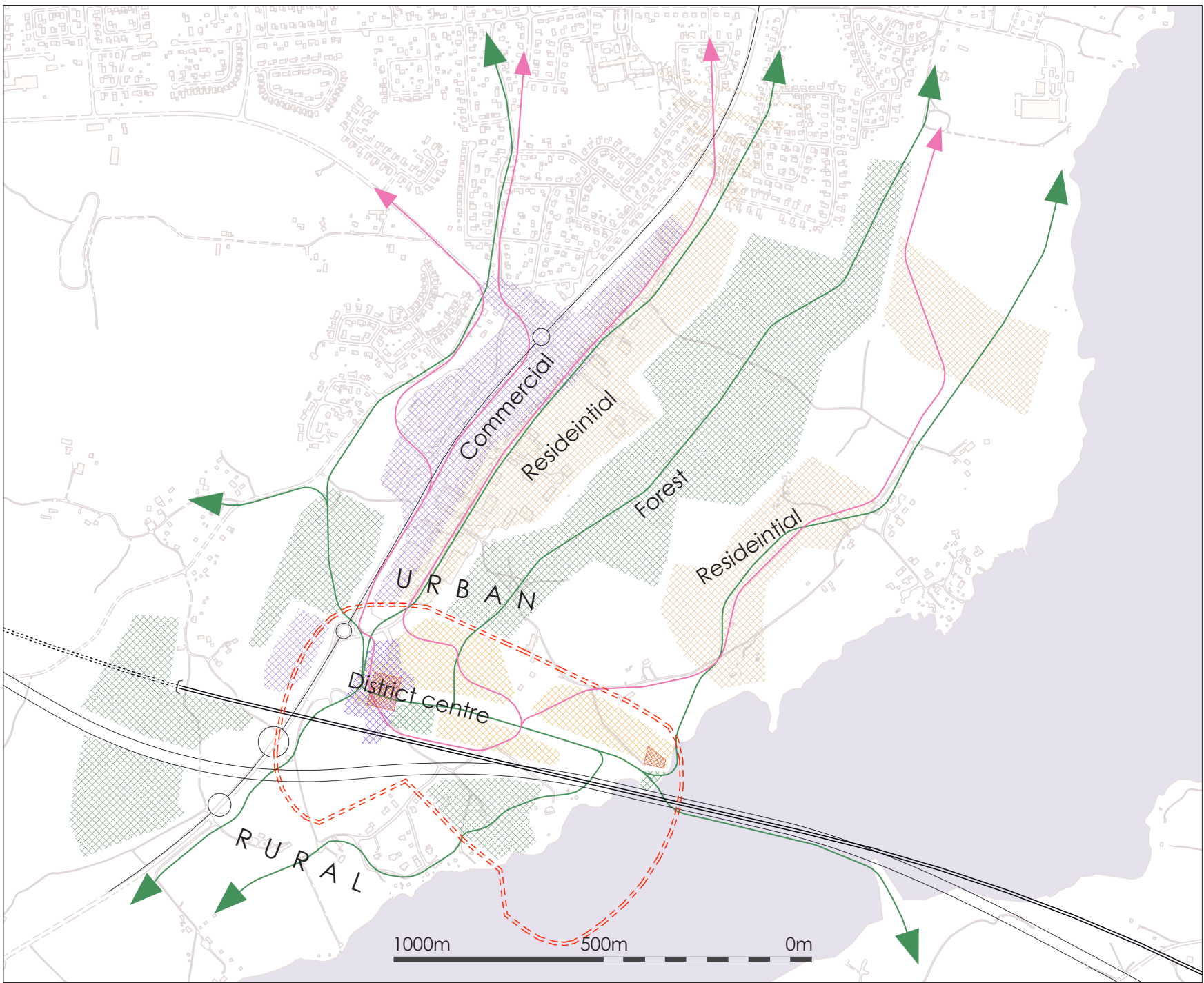
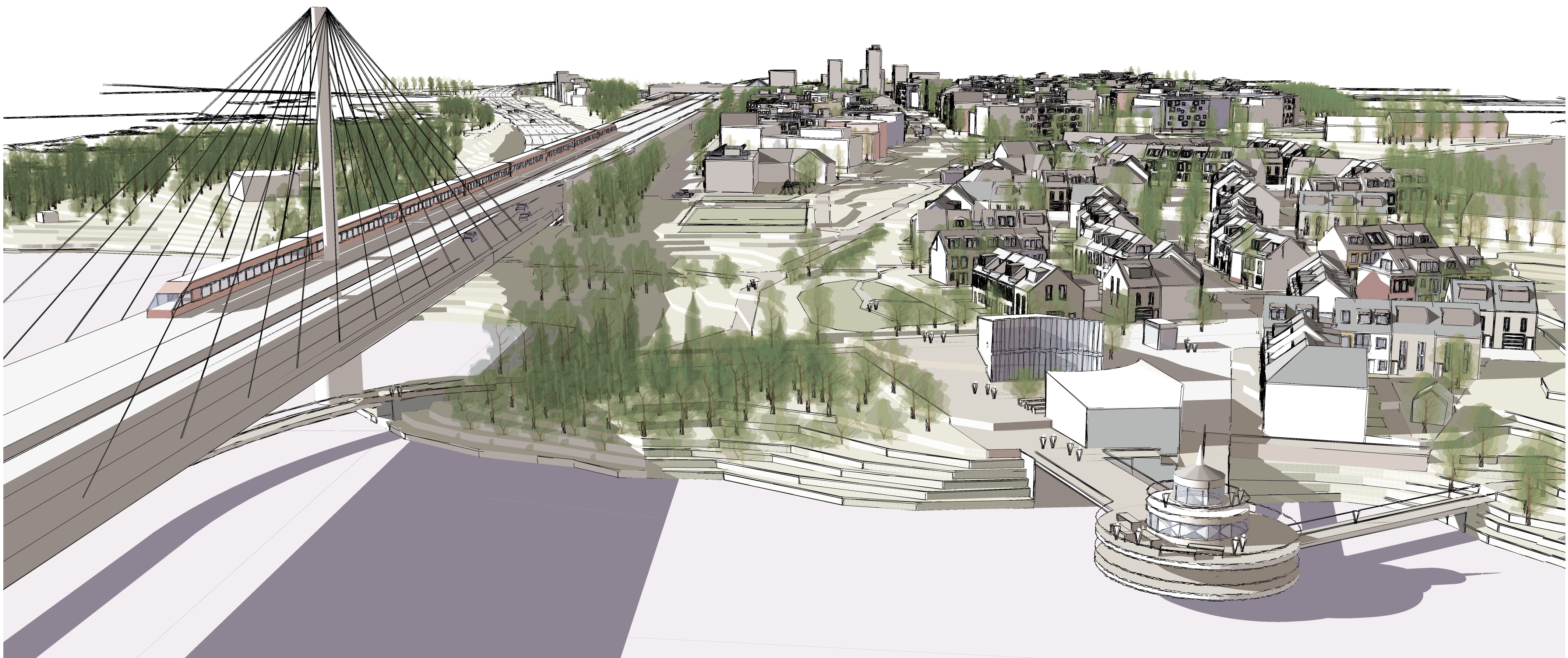


PF221



T H E M E & M A I N I D E A

The two massive pieces of infrastructure that will cut through the site create intriguing challenges to be solved. How to create interfaces with porous edges across, not one, but two walls of noisy concrete? And a smooth transition from urban to rural at the edge of town?

Maybe, in some cases, one ought not to. Instead of trying to dissolve a barrier of that magnitude, it might be better to find what positive aspects such a barrier could provide for this specific site, and define which qualities to try to mitigate and which to draw strength from.

Urban sprawl can be a considerable impediment when it comes to achieving today's values of a sustainable and desirable urban habitat. Karlskoga, already a relatively spread-out town, will with the new station and district around it, spread even further. A **well-defined barrier**, could be an incentive for the future to focus on improving what's already within the edges of the town, rather than to continue spreading outwards.

The train line and highway that cuts right through the middle of the site divides the area into **two distinctly different** landscapes. To the south the area remains as **rural** as possible, with no new functions or residents. To the north is a new, highly **urban** and diverse district of town. At the **heart** of this district is a square, to which all new and old functions are **connected**, either directly or through the green **corridor** that runs through the area and down to the lakeside. This green corridor park provides an inclusive, safe and **welcoming** main route through the residential area, giving **safe passage** to residents on the way to school, kindergarten, work, socializing, shopping, or any other activity, be it by walking, by bike or by using the local self-driving transport pod.

Urban scale varies in accordance with function, position and the speed at which one travels. The closer you come to a residential area, the more **human** the **scale** becomes. Slightly winding streets give you a hint of what is behind the next corner but do not reveal all at once.

The residential area explores new ways of **social** housing, where inclusiveness, accessibility and direct democracy are able to thrive.

