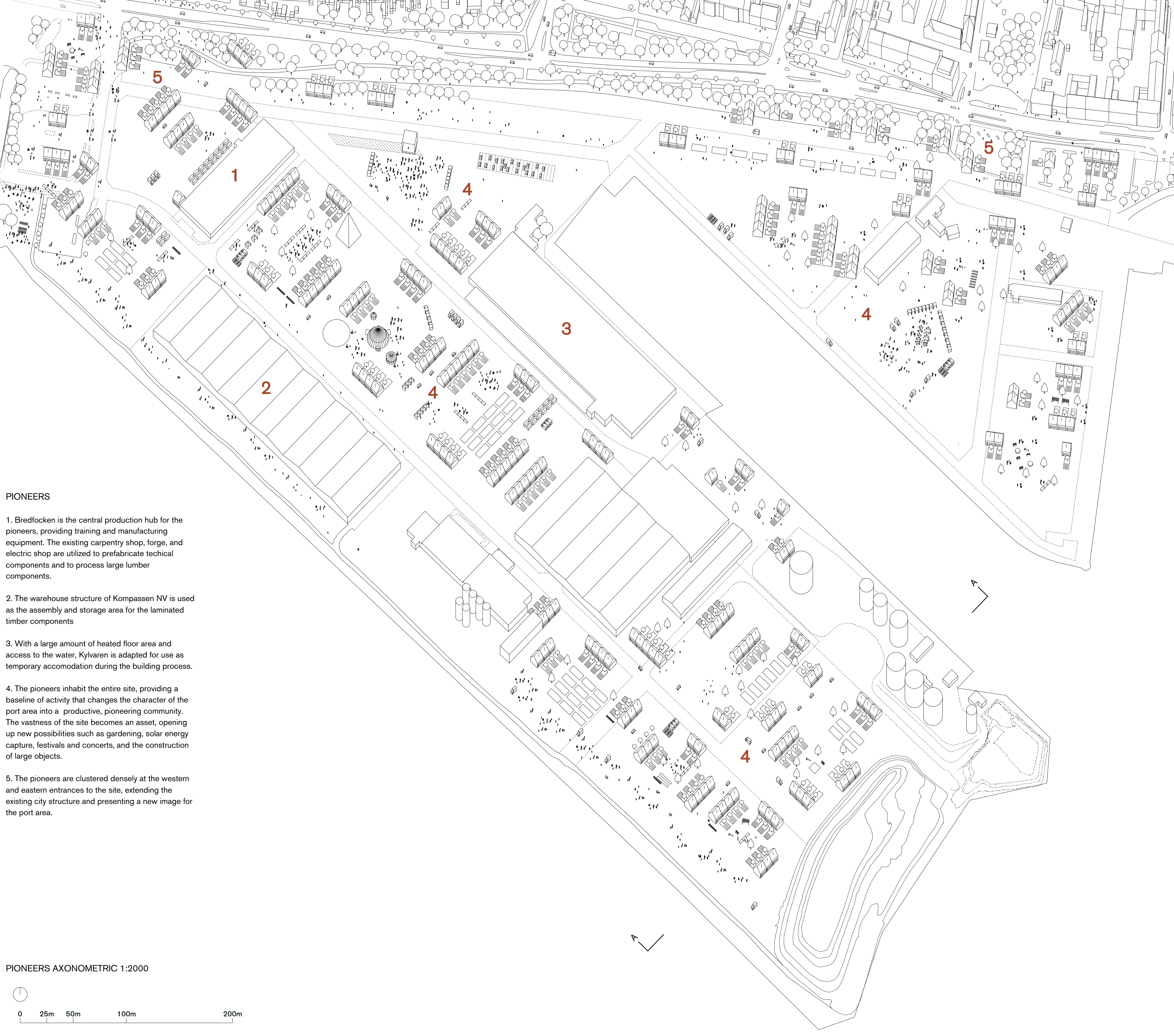


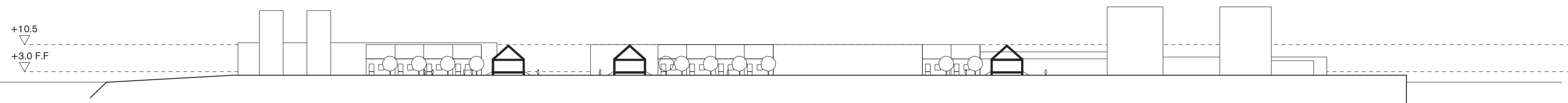
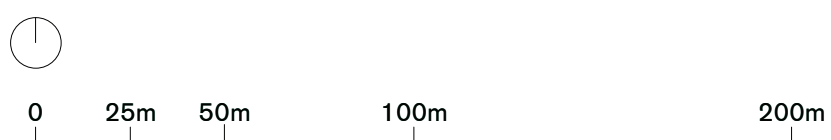
MG488



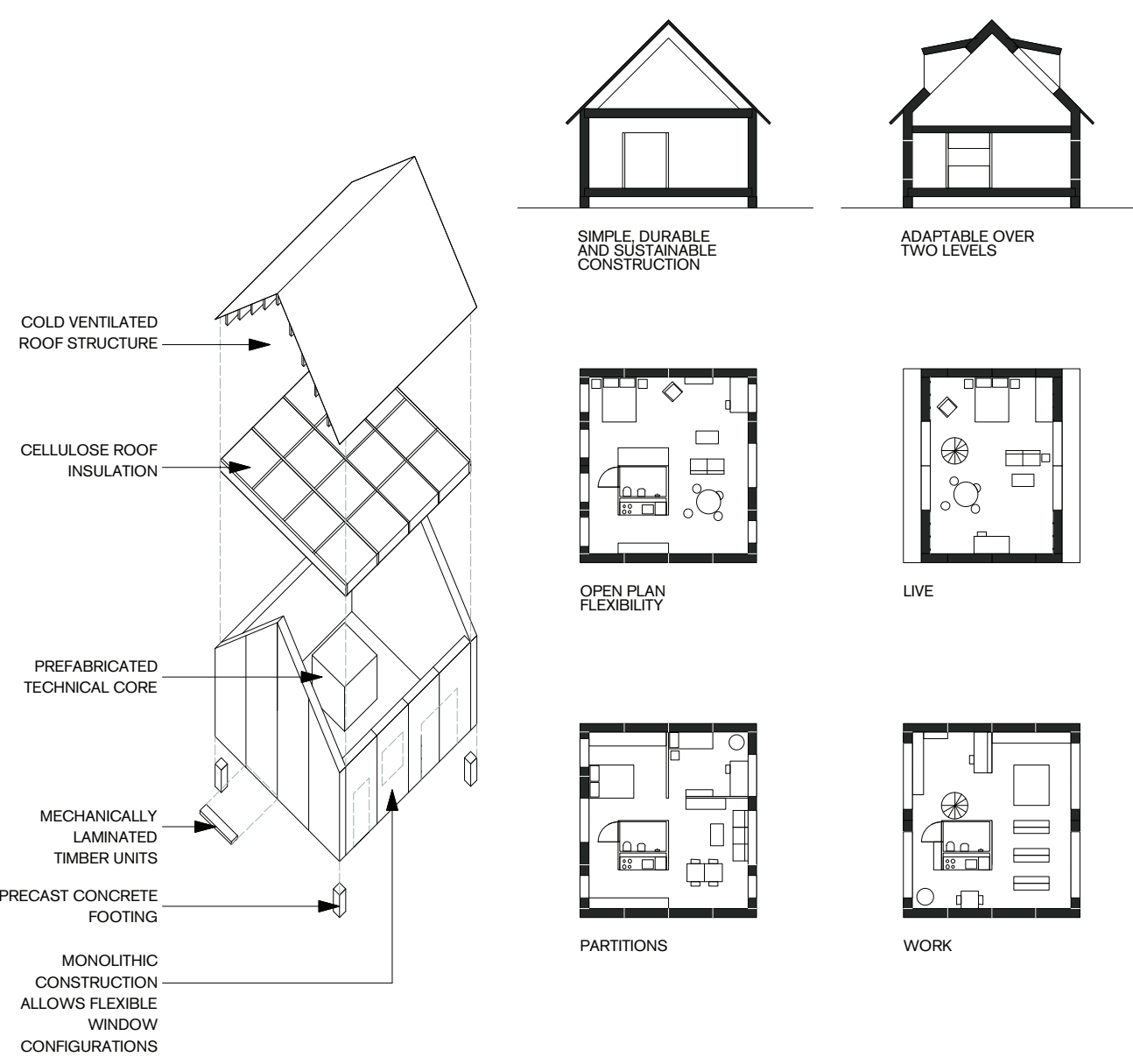
PIONEERS

1. Bredfocken is the central production hub for the pioneers, providing training and manufacturing equipment. The existing carpentry shop, forge, and electric shop are utilized to prefabricate technical components and to process large lumber components.
2. The warehouse structure of Kompassen NV is used as the assembly and storage area for the laminated timber components.
3. With a large amount of heated floor area and access to the water, Kylvaren is adapted for use as temporary accommodation during the building process.
4. The pioneers inhabit the entire site, providing a baseline of activity that changes the character of the port area into a productive, pioneering community. The vastness of the site becomes an asset, opening up new possibilities such as gardening, solar energy capture, festivals and concerts, and the construction of large objects.
5. The pioneers are clustered densely at the western and eastern entrances to the site, extending the existing city structure and presenting a new image for the port area.

PIONEERS AXONOMETRIC 1:2000

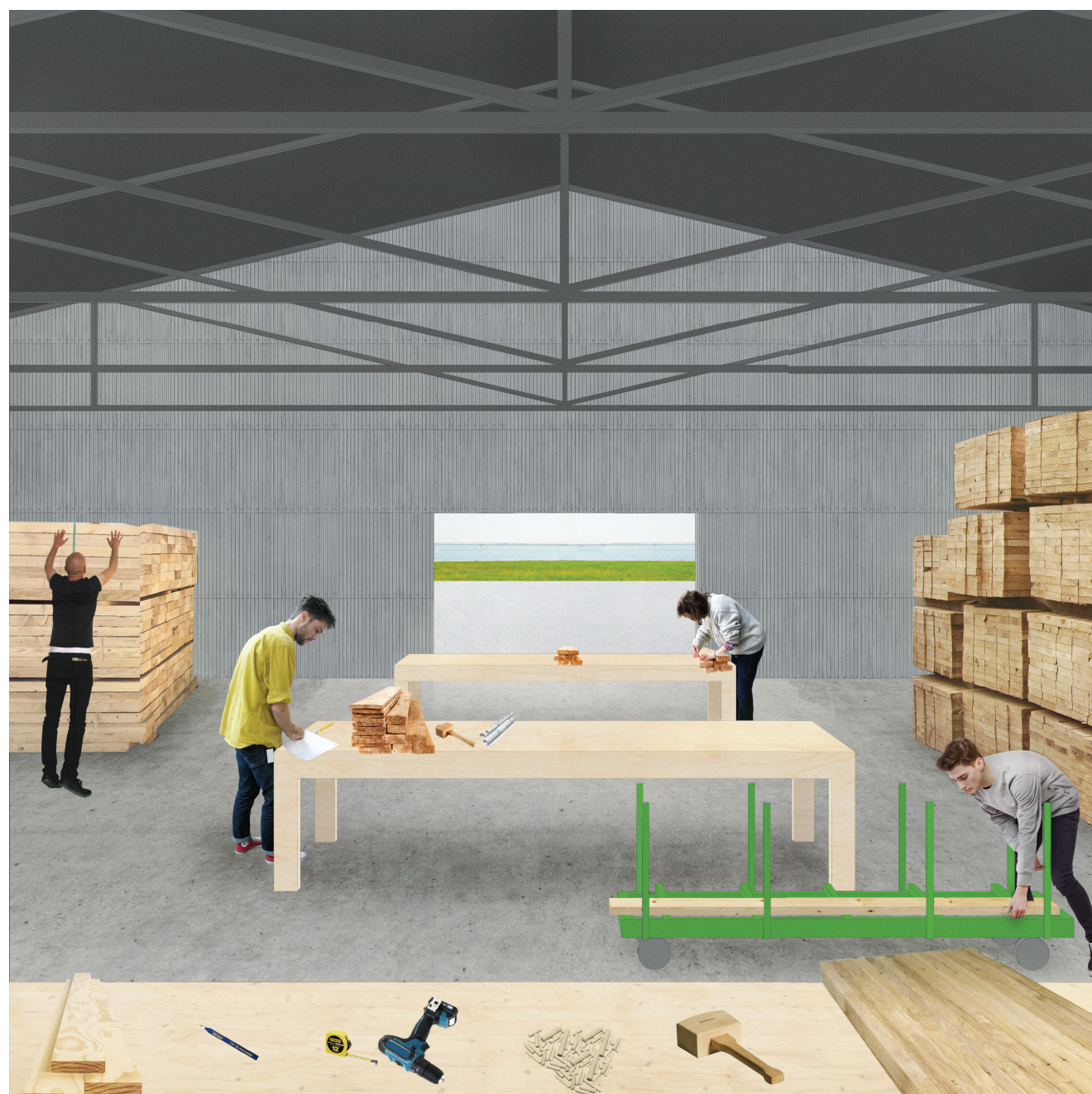


SITE SECTION A-A 1:1000



A 21ST CENTURY LOG CABIN

The basic pioneer home consists of mechanically laminated dimensional lumber 'logs' that simplifies the construction process. Openings and additions can be made by simply cutting through the wooden walls, and the attic can be adapted for later use. Like a log cabin, the structure can be assembled by hand, but perhaps best with some assistance from friendly neighbours.



PRODUCTION

Existing warehouse and workshop spaces are utilized as staging areas to produce components that are then quickly assembled on site. Pioneers develop technical skills through the building process with the community of Trelleborg.



LABOUR

On-site assembly is streamlined with the pre-assembled components that minimize the use of capital intensive machinery. The pioneering process privileges the role of labour over the role of capital, opening up new possibilities in the production of the city itself.